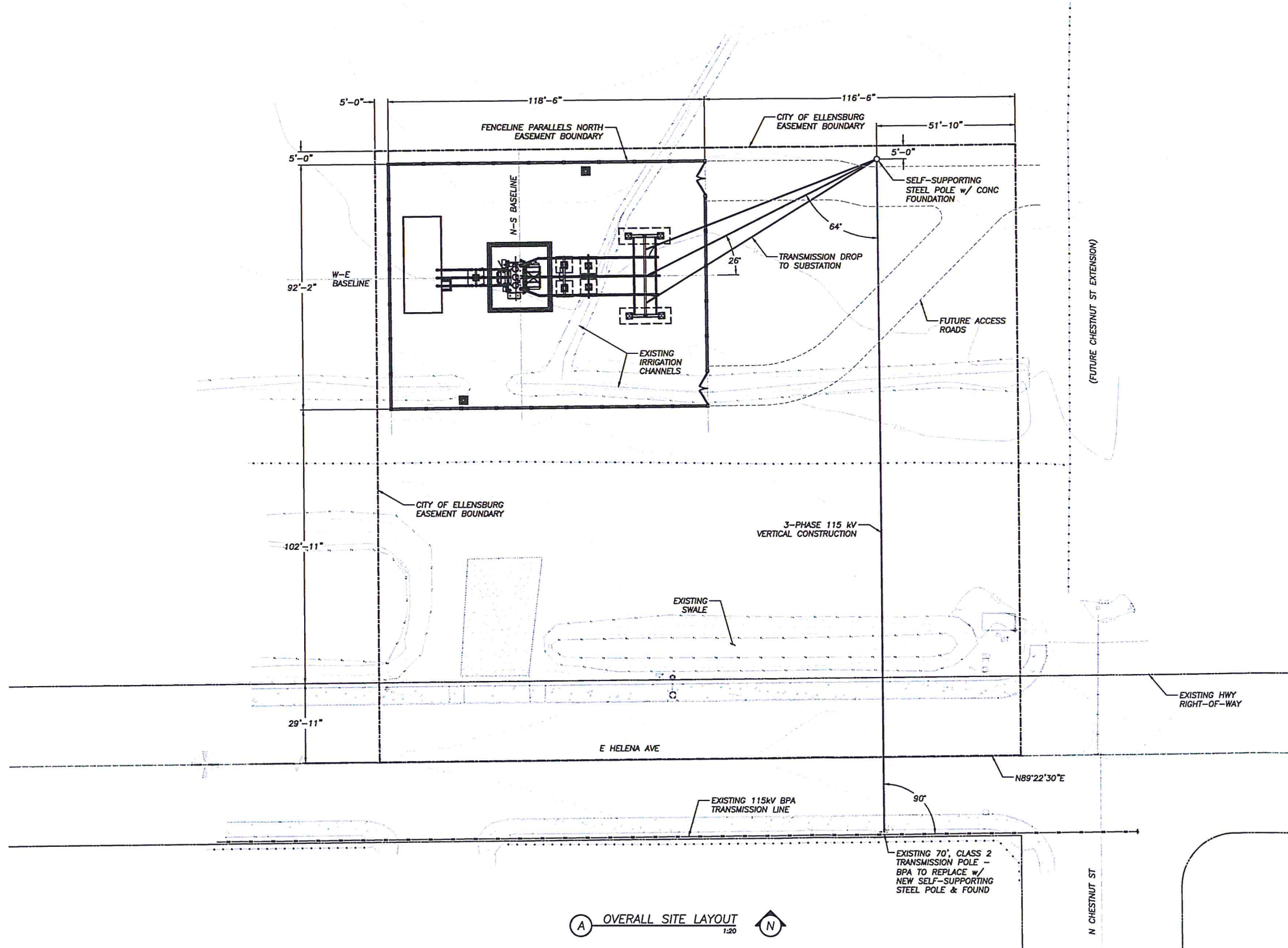


**GENERAL NOTES**  
 1 EXISTING CONDITIONS SURVEY PROVIDED BY ENCOMPASS ENGINEERING & SURVEYING



(A) OVERALL SITE LAYOUT  
 1:20

REV	DATE	DESCRIPTION	DESIGNER	REVIEWER
A	10/04/13	50% CHECK SET	EH/SH	MHK



**Brown & Kysar, Inc.**  
 Engineering & Consulting  
 11601 867.596 | 11601 867.519  
 B&K  
 BKI PROJECT NO: EL13-001  
 CONTRACT NO: \_\_\_\_\_  
 THIS LINE IS 1" LONG AT THE CORRECT SCALE

**HELENA AVENUE SUBSTATION**  
 SITE PLAN OVERVIEW  
 CITY OF ELLENSBURG  
 501 NORTH ANDERSON STREET  
 ELLENSBURG, WA 98926

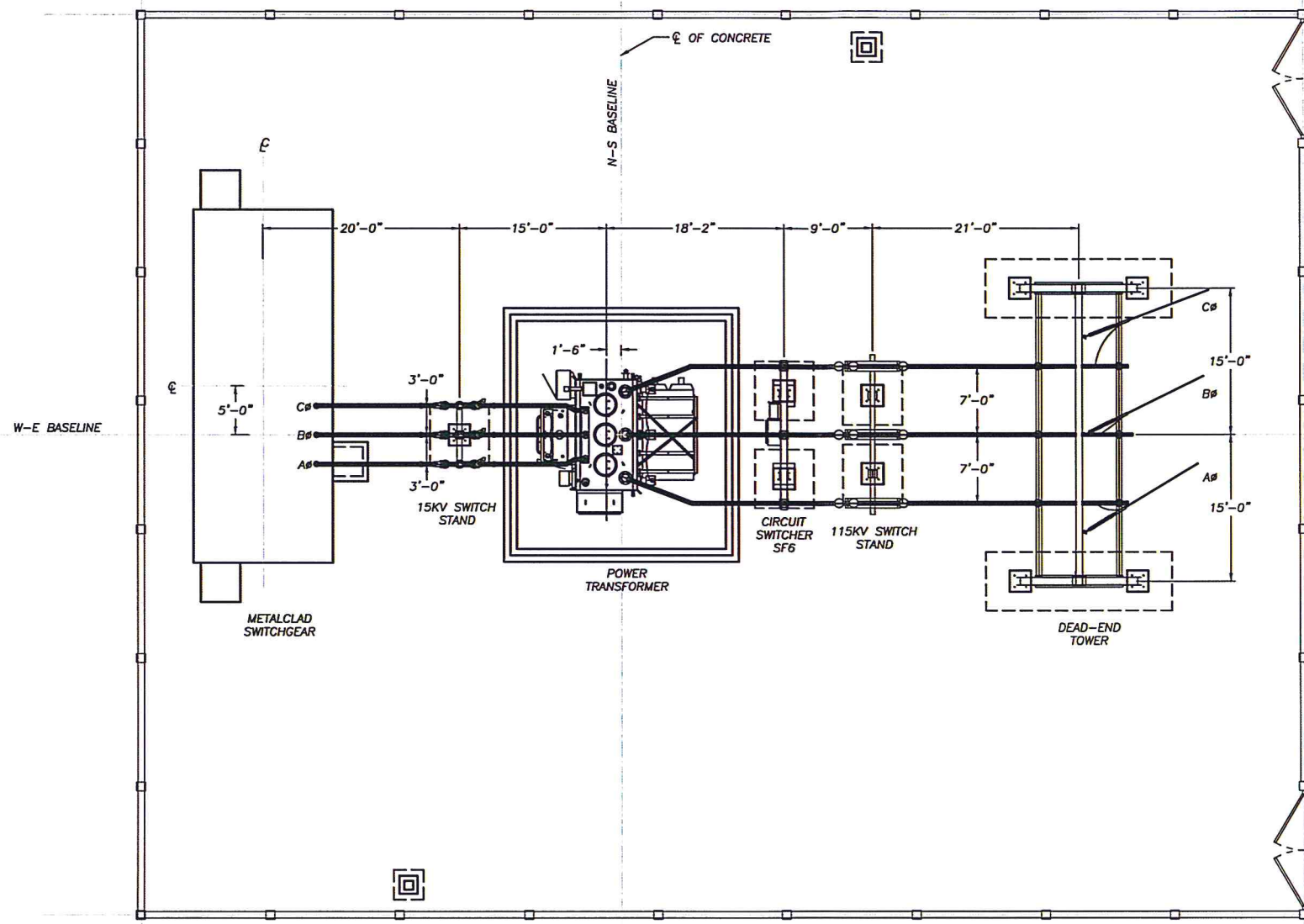


A  
 REVISION

**A3**

NOT FOR CONSTRUCTION

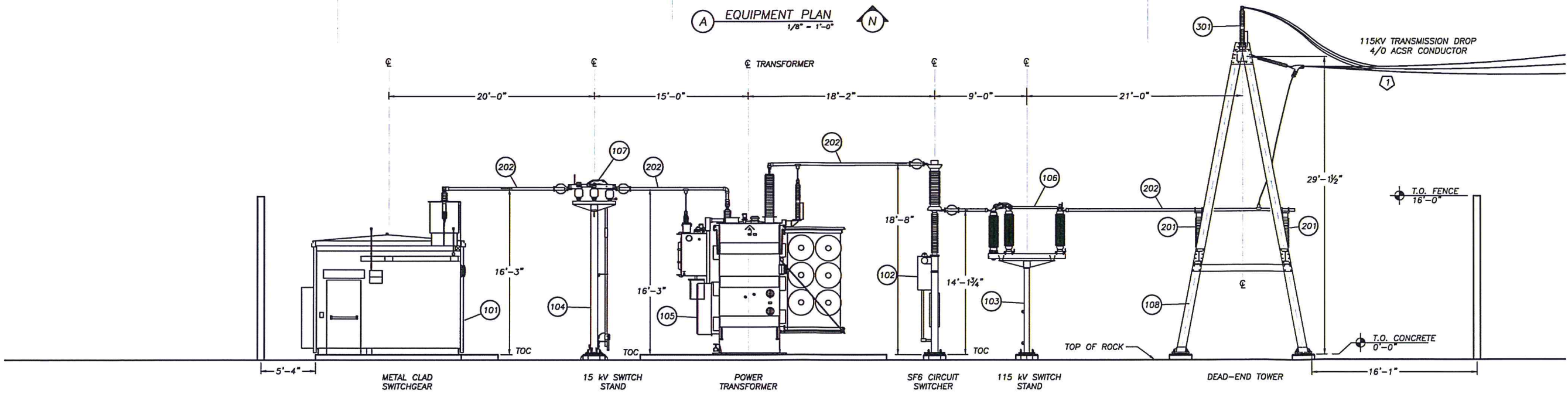
K:\Projects\0600 PROJECTS\11-01 Helena Ave Substation\11-01-01 SITE PLAN OVERVIEW.dwg, User: kysar, Date: 11/22/2012 2:10 PM



- GENERAL NOTES**
- 1 SEE SHEET E5 FOR ADDITIONAL BUS LAYOUT & FITTING CALLOUTS
  - 2
  - 3

- KEYED NOTES**
- 1 TRANSMISSION DROP, MAX 1500 LB. TENSION PER CONDUCTOR
  - 2
  - 3

(A) EQUIPMENT PLAN  
1/8" = 1'-0"



(B) EQUIPMENT NORTH ELEVATION  
3/16" = 1'-0"

NOT FOR CONSTRUCTION

REV	DATE	REVISION DESCRIPTION	DESIGNER	REVIEWER
A	10/01/13	50% CHECK SET	EH/SH	RHK



**Brown & Kysar, Inc.**  
Engineering & Consulting  
11601 8th Avenue SE, Suite 100  
Ellensburg, WA 98926  
Phone: (509) 897-5259

BKI PROJECT NO: E113-001  
CONTRACT NO: \_\_\_\_\_  
THIS LINE IS 1" LONG  
AT THE CORRECT SCALE



**HELENA AVENUE SUBSTATION**  
EQUIPMENT PLAN AND ELEVATION

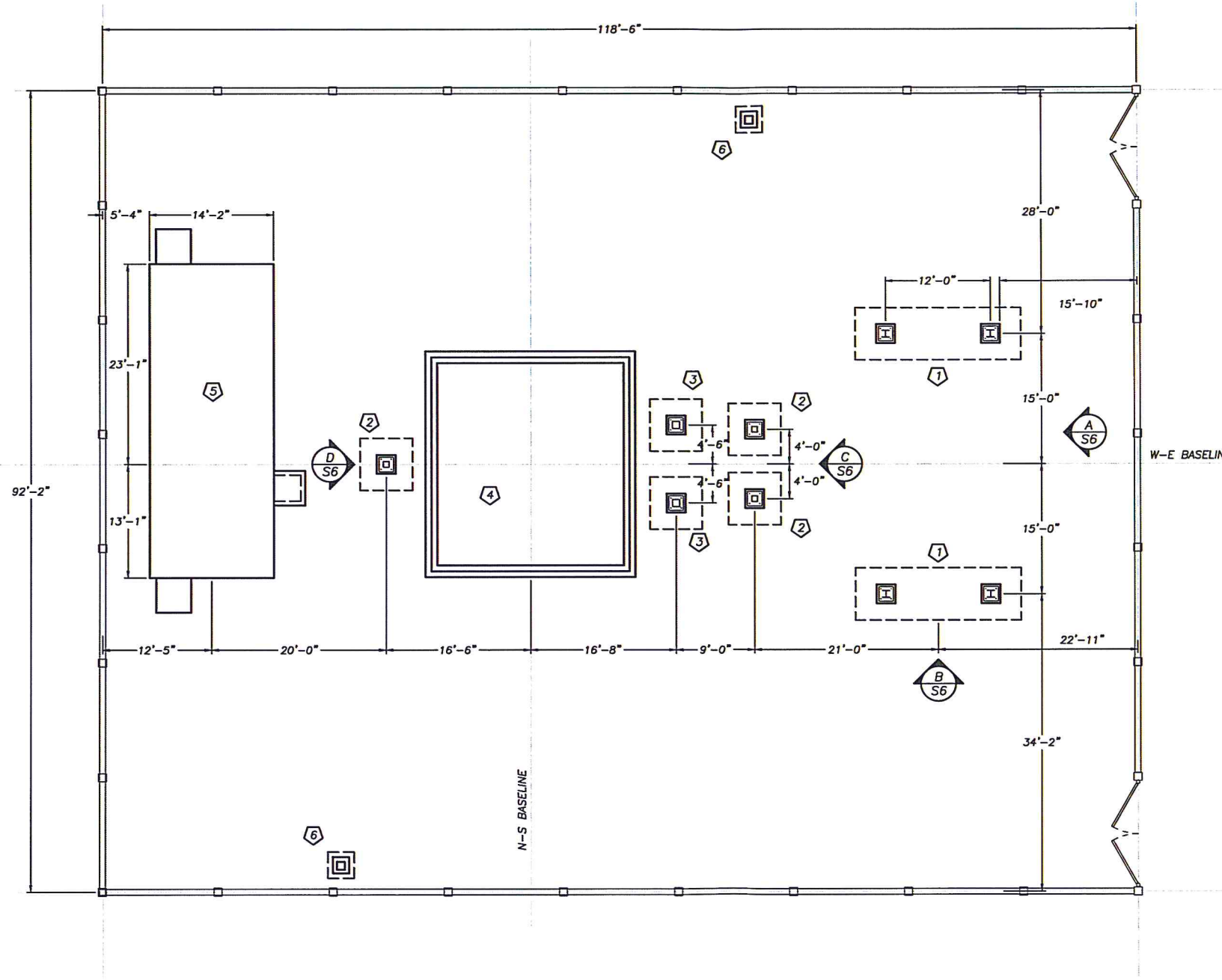
CITY OF ELLENSBURG  
501 NORTH ANDERSON STREET  
ELLENSBURG, WA 98926

A

A4

K:\Projects\69 PROJECT\03-11-13\11-01-A4-EQUIPMENT PLAN AND ELEVATION.dwg, 5/11/2013 11:18:11 AM

C:\Ellensburg\B00 PROJECTS\ELL13-001 Helena, WA - 52705\B00\SECTION PLAN.dwg, 5/24/13 10:43:27 AM



(A) FOUNDATION PLAN  
1/8" = 1'-0" (N)

- GENERAL NOTES**
- TOP OF CONCRETE ELEVATIONS TO BE 1637.50'
  - FOR LOCAL REFERENCE TOP OF CONCRETE ELEVATION TO BE 0'-0"
  - SEE ADDITIONAL STRUCTURAL NOTES ON SHEET S1

- KEYED NOTES**
- DEADEND FRAME FOOTING, SEE 1/S3
  - SWITCH STAND FOOTING, SEE 2/S3
  - CIRCUIT SWITCHER FOOTING, SEE 3/S3
  - TRANSFORMER FOUNDATION, SEE SHEET S4
  - SWITCHGEAR FOUNDATION, SEE SHEET S5
  - LIGHT POLE FOOTING, SEE 4/S3

REV	DATE	REVISION DESCRIPTION	DESIGNER	REVIEWER
A	10/04/13	50% CHECK SET	EH/SH	MHK



**Brown & Kysar, Inc.**  
Engineering & Consulting  
11500 687.3966 | 11500 687.5339

BKT PROJECT NO: ELL13-001  
CONTRACT NO: \_\_\_\_\_

THIS LINE IS 1" LONG  
AT THE CORRECT SCALE

**HELENA AVENUE SUBSTATION**  
FOUNDATION PLAN

**CITY OF ELLENSBURG**  
501 NORTH ANDERSON STREET  
ELLENSBURG, WA 98926

**Filetsbury**  
ENGINEERING

**A** REVISION

**S2**

NOT FOR CONSTRUCTION